

# Zortemp 1000 - Temp Monitor Software Setup Manual

When you receive your WiFi capable parts for your Zortemp 1000, you will need to download the latest Temp Monitor software onto your computer. This can be found at [www.zorpro.com](http://www.zorpro.com). At the very bottom of the website, you should see a “Support” link. In there you will find a download link for the Temp Monitor Software. [https://www.zorpro.com/wp-content/uploads/Temperature%20Monitor%20App\\_signed\\_1.0.6.0\\_msi.zip](https://www.zorpro.com/wp-content/uploads/Temperature%20Monitor%20App_signed_1.0.6.0_msi.zip)

**Downloading the software** - Click on the Download link and follow all prompts. Be sure to allow all files to download including those that may show warnings during download. This is a secure link.

With the software installed, open your computer’s Wi-fi settings to connect to the ZT1000. (it may appear as DF533 or similar) No password is needed.

After connecting to the ZT1000, open an Internet browser on your PC. In the search bar, type **10.10.100.254** . You will be prompted to sign into the settings for your temperature scanner.

Type in “**admin**” for both user name and password

Select **Wi-fi settings** on the left hand side

Set **Wi-fi Mode** to **AP+STA mode**

If you would like to change the wifi name of your ZT1000 (DF533) you can do so in the **Network Name** bar under AP Mode. An example is (Temperature Scanner 1)

Under **STA Mode**, you will need to find your existing company Wi-Fi or internet connection, in the **Network name(SSID)** bar. To find your network or Wi-Fi, click on the **Search** button to the right of the network name bar. Select your company Wi-Fi from the list of connections available. You will now need to enter the password for the selected Wi-Fi in the **STA Password** bar. Example shown below.

**Save and restart the Wi-Fi settings.**

The screenshot displays the web interface for the Zortemp 1000. At the top, it shows 'Web:V2.3.4' and 'Firmware Version:V3.0.1'. The interface is divided into a left sidebar with navigation options: 'System Status', 'WiFi Setting' (highlighted in orange), 'Trans Setting', and 'System Setting'. The main content area is titled 'WiFi Mode Select' and features a dropdown menu set to 'AP+STA mode'. Below this, there are two sections: 'AP Mode' and 'STA Mode'. The 'AP Mode' section includes fields for 'Network Name(SSID)' (DF533), 'Password(8-63 bytes)' (NONE), 'IP Address' (10.10.100.254), and 'Mask' (255.255.255.0). The 'STA Mode' section includes a 'Network Name(SSID)' field with a 'Search' button (containing 'JC\_Dev-ADA4-2.4\_GHz'), 'Encryption Method' (AUTO), 'STA Password' (orbitDev01), and 'DHCP' (Enable). A 'Save' button is located at the bottom of the settings area. On the right side, there is a 'Help' section with the following information: 'Network Name(SSID): 1-32 characters Case sensitive', 'Password: The AP password is 8-63 bytes (STA password without this restriction), NONE said no encryption; Case sensitive', and 'DHCP: Open this feature, will get IP by dhcp; turn off, need to manually enter the IP'.

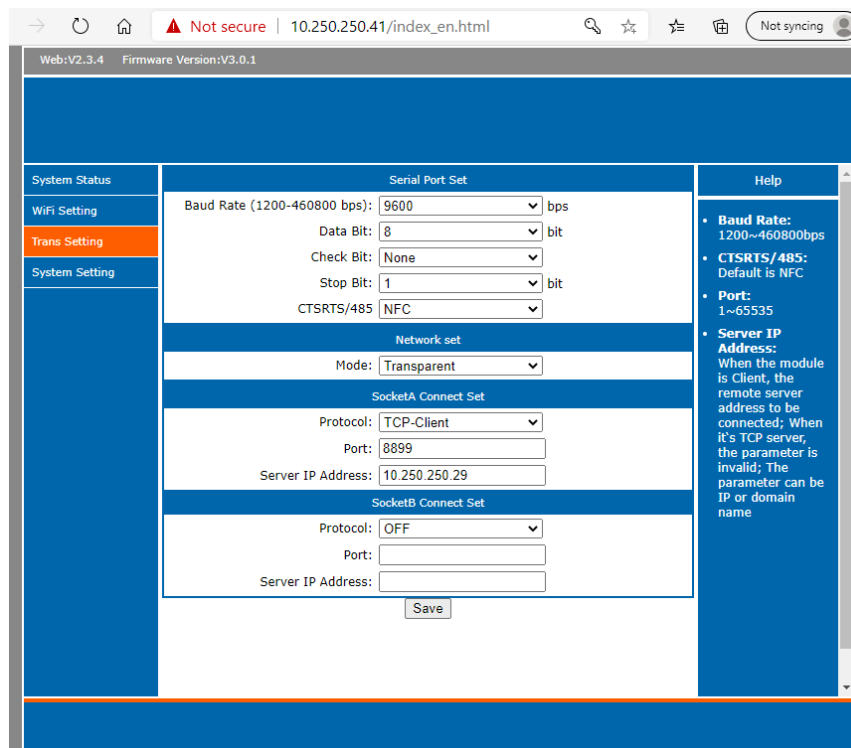
After you save and restart the Wi-Fi settings, you will need to sign in again using "Admin" for the username and password just like before. Once again using the same Wi-Fi signal and same ip to login to the software settings.

Select **Trans Settings** on the lefthand side.

Under **SocketA Connect Set**, In the **Protocol** bar, select "TCP-Client."

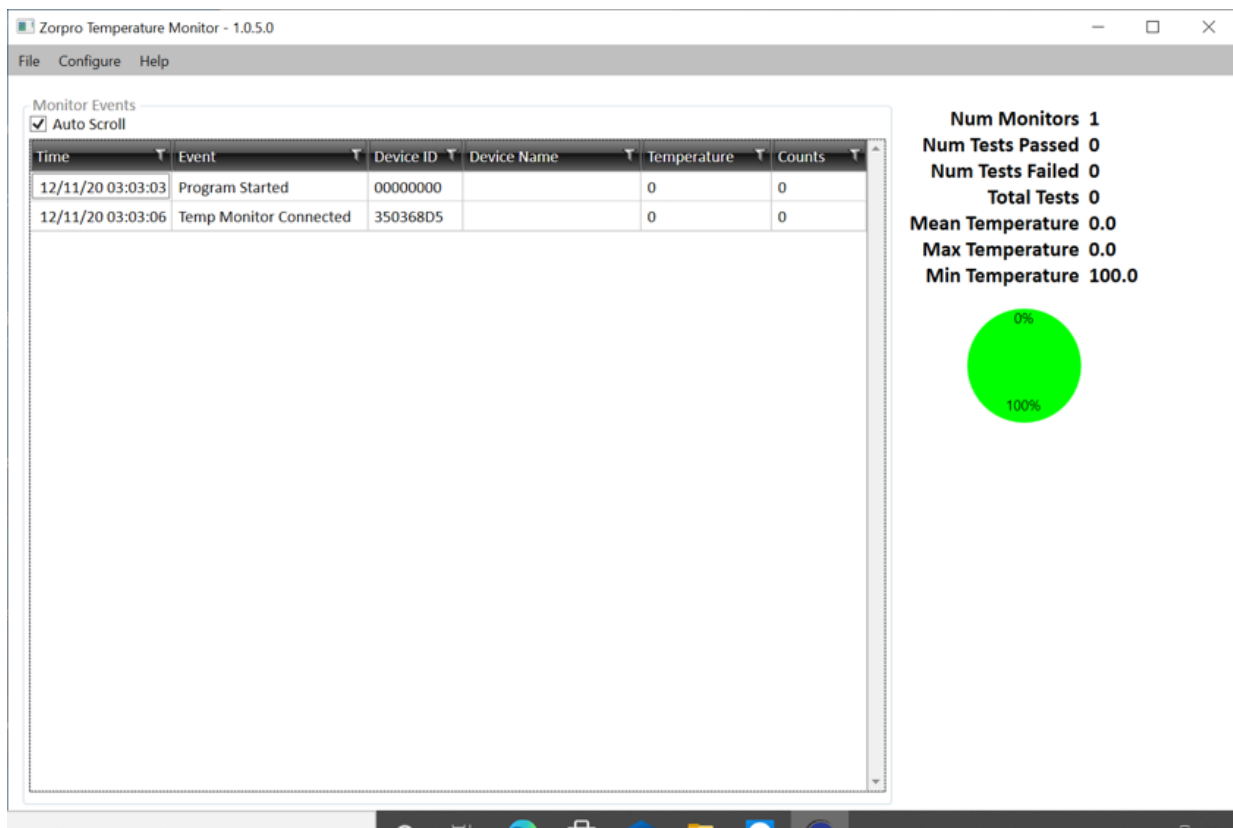
You will need to enter your **Server IP Address** for the network you are using (not the Zortemp 1000). To find your server's IP address, open your Network and Internet settings on your PC for the existing network (not the Zortemp network). Click on **Status**, then **Properties**. Scroll down until you see your **IPv4 address**. Type this address into the **Server IP Address** field in the ZT1000 Wi-Fi Settings.

Save these settings and restart.



When the Wi-Fi setting have restarted, close the browser window. You can now disconnect from Zortemp Wi-fi, and reconnect PC to your company Wi-fi ( not the Zortemp Wifi ).

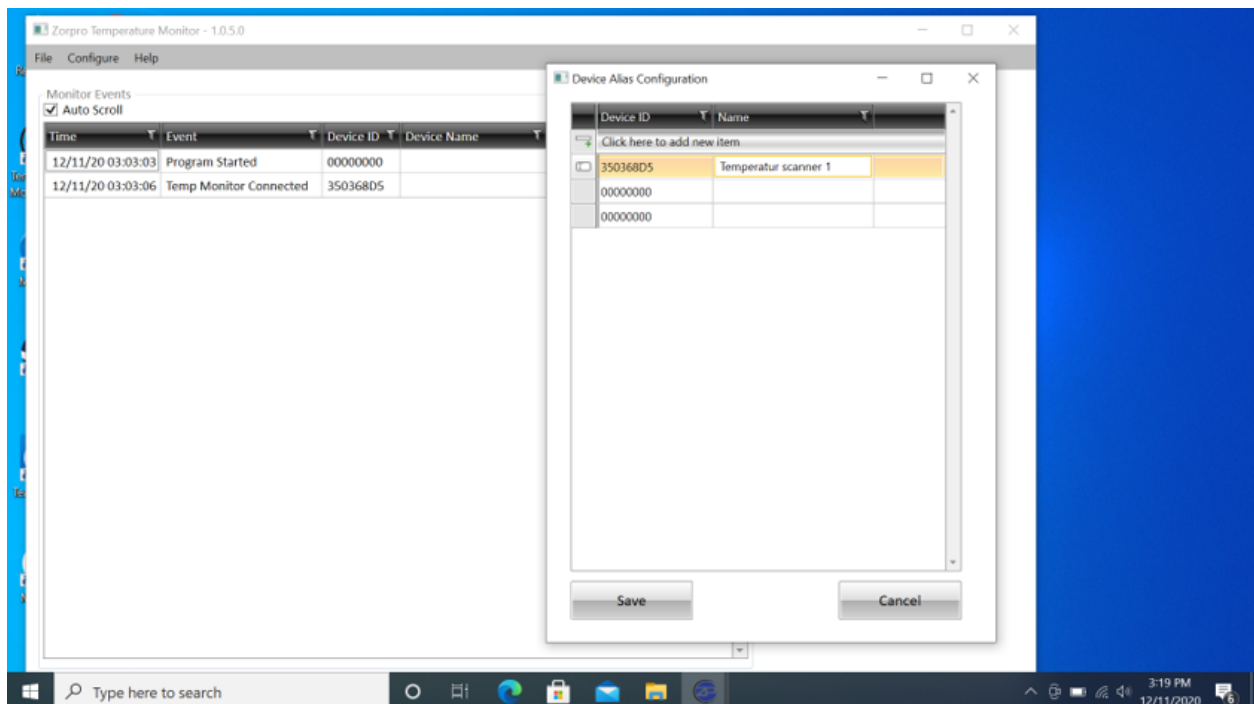
Open your newly downloaded Zorpro Temperature Monitor software. The default install location file is: C:\Program Files (x86)\Zorpro\TemperatureMonitorApp.



you should see the following screen.

Click on **Configure**, select **Device Alias Setup**. A smaller widow will appear. Select “**click here to add new item**”.

If you want to rename your temperature scanner in the software follow these steps: Under **Device ID**, of the main screen, you will see a Hexadecimal number similar to “**350368D5**”. You’ll need to type that number into the smaller window under **Device ID**. If you would like to rename your scanner you can do so under **Device Name**. See below for an example.

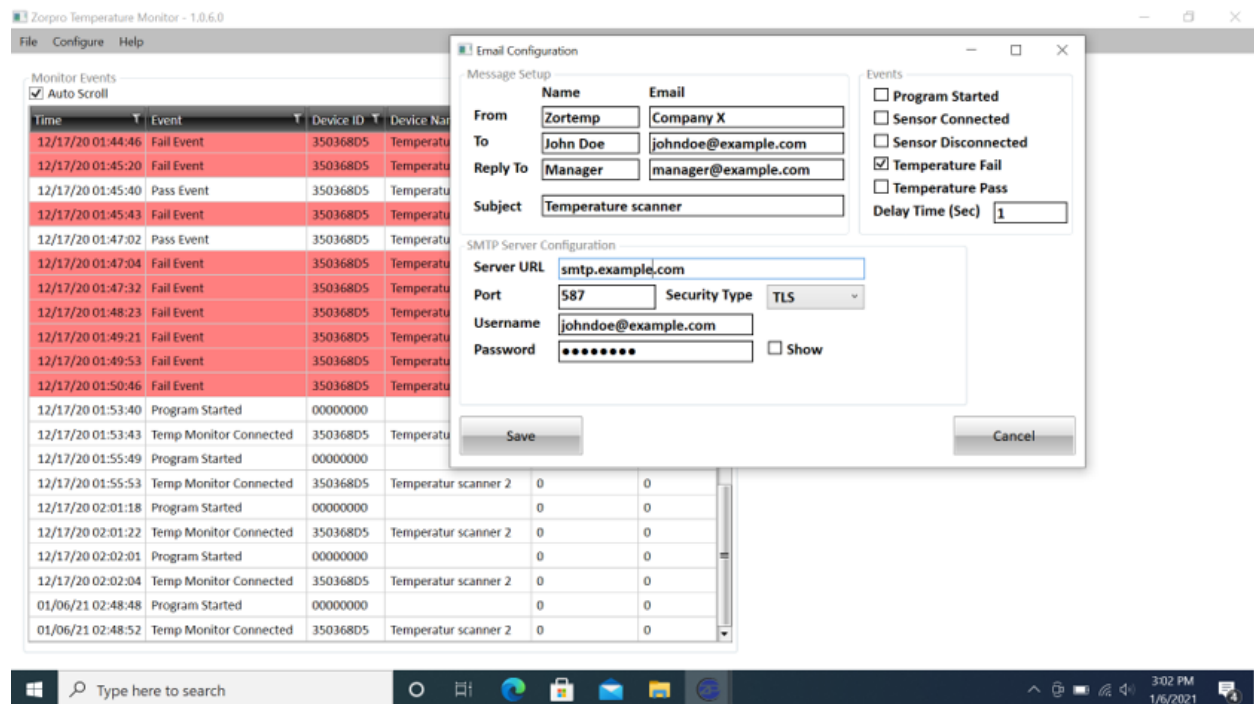


Save and Exit the configuration screens. You should now be back to the main monitoring screen.

### Exporting and viewing history Data:

If you would like to view past history or view the data in a spreadsheet program such as Excel you can view and open the csv file. This file is automatically generated and updated. The location can be found here: **<MyDocuments>/Zorpro/Temperature Monitor/history.csv**

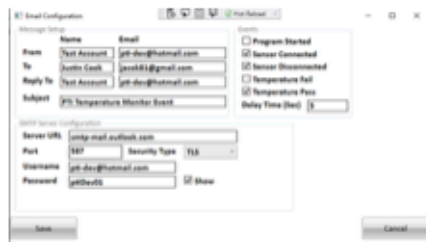
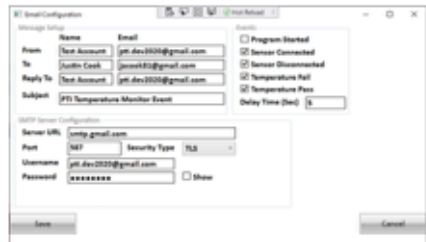
**Setting up Email Alerts:** The software can send email alerts. To setup email alerts, click on **Configure**, select **Email Setup**. You'll see the following screen.



Fill out the email information and select what options you want to be included in each email. Under **SMTP Server Configuration** you will need to be sure to include the server information that is pertinent for your particular email provider. (Example: GMAIL's **Port** is 587) The **SMTP Server Configuration** area is for the email that will be sending the notifications. You will need to enter your email and password. If you see an **"Email Error"** message on the main screen, this means you entered something incorrectly in the **SMTP Server Configuration** area.

Note that you can also choose how often the software sends an email alert. This option is listed as **"Delay Time (sec)**. Selecting **1** will send the temperature results 1 second after each scan is complete. If you have multiple people coming in at once, you may wish to extend that time to allow for more people to scan before an email is sent.

Listed below are a couple of examples of email server settings.

|         | Email Address  | Password | SMTP Server  | Port | Security Type | Setup Screenshot   |
|---------|--|----------|--|------|---------------|--|
| Hotmail | <a href="mailto:Pti-dev@hotmail.com">Pti-dev@hotmail.com</a>     | ptiDev01 | <a href="mailto:smtp-mail.outlook.com">smtp-mail.outlook.com</a> | 587  | TLS           |   |
| Gmail   | <a href="mailto:Pti.dev2020@gmail.com">Pti.dev2020@gmail.com</a> | ptiDev01 | <a href="mailto:smtp.gmail.com">smtp.gmail.com</a>               | 587  | TLS           |  |

Contact Zorpro with any questions or if you need assistance.